

V-Slim II (Dotted type)

Super-slim profile of just W8.1 mm x H11.9 mm with built-in plug-in connector that allows head-to-head fixture-to-fixture connection.

Suitable for cabinet, niche lighting or other furniture applications.

DC24V

12.0W/m

Indoor

Ra93 typ.

Including CCT 1800K
2000K, 2200K
2500K

Dimmable
(DMX, DALI,
0-10V)

+ R9 90 CRI Ra 98 (typical) available as semi-custom spec ⇒ Refer to model code page

Frosted diffuser cover

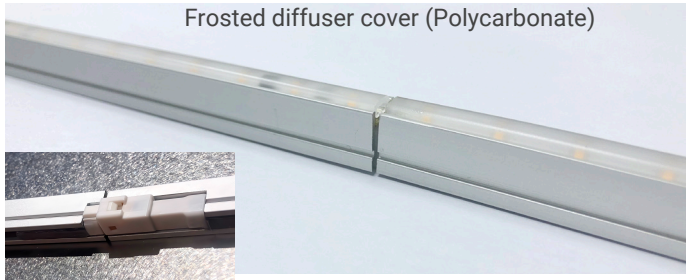
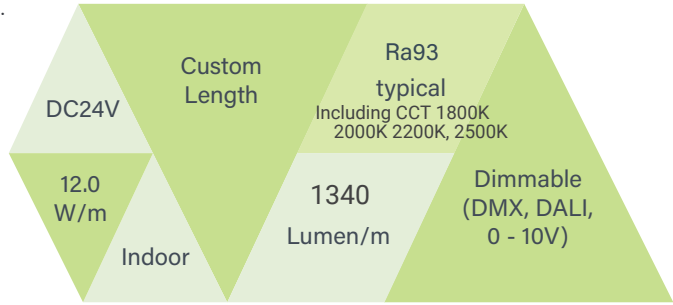
Upgraded male-female connector
with lock function



FEATURES

- Ultra-slim profile W7.9 mm(max point at connector 8.1mm) x H11.9mm.
- Built-in connector that allows head-to-head seamless connection.
- Available CCT 1800K, 2000K, 2200K, 2500K, 2700K, 3000K, 3500K, 4000K
- Reliable/High-efficiency NICHIA LED chip with reverse-polarity protection circuit.
- Minimized voltage drop due to wires running through the whole housing.
- Binning control: MacAdam 3 step (single-binning)

BASIC SPECIFICATION



upgraded connector with lock function

PRODUCT SPECIFICATIONS

Product Name	V-Slim II				
Model No.	VSII0331-XXXX	VSII0661-XXXX	VSII0826-XXXX	VSII0991-XXXX	VSII1156-XXXX
Input Voltage	24Vdc	24Vdc	24Vdc	24Vdc	24Vdc
Power Consumption	4 W	8 W	10 W	12 W	14 W
Dimension (mm)	331*8.1*12(H)	661*8.1*12(H)	826*8.1*12(H)	991*8.1*12(H)	1156*8.1*12(H)
Weight	60 grams	118 grams	144 grams	171 grams	198 grams
Casing Body	Aluminium Heatsink with UV-resistant Polycarbonate Semi-Frosted Diffuser				
LED Beam Angle	110°	110°	110°	110°	110°
Operating Temperature	-10°C~50°C	-10°C~50°C	-10°C~50°C	-10°C~50°C	-10°C~50°C
Max. Length of Series Connection	4 meter	4 meter	4 meter	4 meter	4 meter
Option Parts	Metal Mounting Bracket 0° (Flat) Type				
No of LEDs	28	56	70	84	98
Power Supply Unit (Gear-Driver)	Constant-Voltage Switching Power Supply (TDK Lambda, Sold Separately)				
Lumens (typical @ CCT 3000K)	442	885	1106	1348	1549

+ LM80 test report available upon request

+ MacAdam 3 step (single-binning)

MODEL NO

Model No

VSII XXXX – XXXX (- XX)

Fixture Type & Fixture Length

Color Temperature



NONE: Standard CRI Ra 93 (typical)

OS: CRI Ra98 (typical) R9 90
As semi-custom specification

Fixture Type & Fixture Length

- VSII1156** → V-Slim II L1156mm
- VSII0991** → V-Slim II L991mm
- VSII0826** → V-Slim II L826mm
- VSII0661** → V-Slim II L661mm
- VSII0331** → V-Slim II L331mm

** Above stated fixture length does not include connectors.*

Other types of Semi-custom Available Fixture length : L579mm, L496mm, 390mm, 249mm, 143mm

Color Temperature

- 403B** → LED Color 4000K
- 353B** → LED Color 3500K
- 303B** → LED Color 3000K
- 273B** → LED Color 2700K

Other Available CCT: 1800K, 2000K, 2200K, 2500K, 4500K, 5000K, 7800K (Built-to-order basis)

Example

VSII0331 – 273B

Fixture Type & Fixture Length

⋮

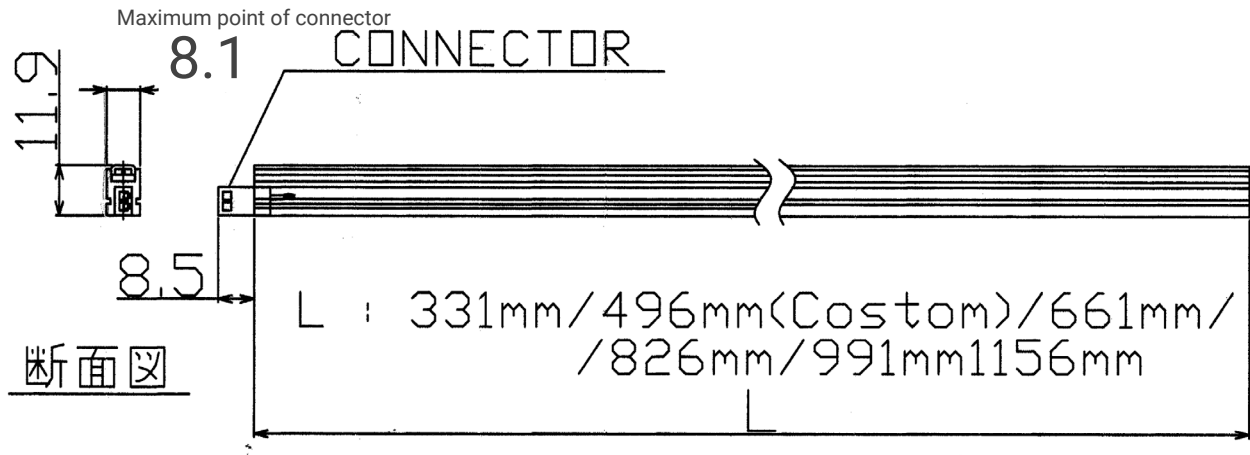
V-Slim II L331mm

Color Temperature

⋮

LED Color 2700K

MECHANICAL DRAWING

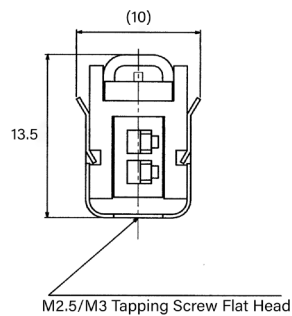
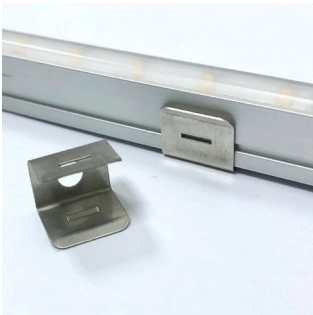


Other types of custom-made fixture length: 579mm, L496mm, L390mm, L249mm, L143mm

OPTIONAL ACCESSORIES

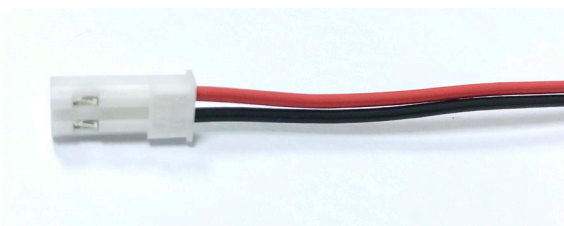
1 Mounting Clip Bracket 0° Flat Type

Model: MMC-VS-0DEG



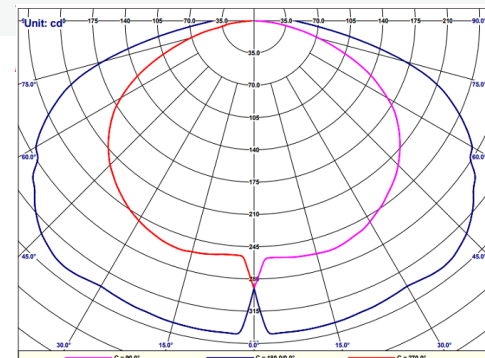
2 Male Harness Connector with L500mm Cable

* Required for first LED Fixture leading to PSU driver



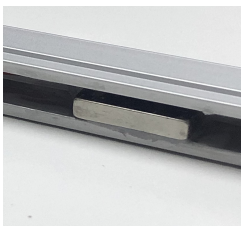
PHOTOMETRICS

BROWNIE Lab 190214



(This is for V-SLIM original version. IES for the latest version V-SLIM II will be ready soon.)

3. Magnet (fixture Built-in)



4. Metal Plate For Magnet Installation

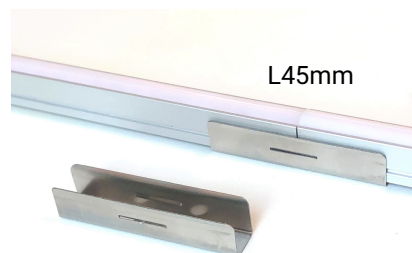
Two(2) Options: 0deg flat
/or 30deg tilted



Dimension: L75mm x W7.6mm x Thickness 2.0mm
With tapping screw (flat head) 2pcs per each plate

4. Fixture-to-fixture Bracket

Model: MMC-VS-L45



+ Use M2.5/M3 flat head tapping screw (x 2)
+ The same profile as metal mounting clip bracket(0deg)